

CHECK OUT THE LOW PRICES ON OUR MAGNETIC SHEET HANDLERS:



SH-600 \$180.00



SH-400 \$160.00



SH-250 \$140.00



SH-100 \$90.00

SH-100 for handling 25 to 50 lbs.
 SH-250 for light gauge sheet up to 125 lbs.
 SH-400 for maximum loads of 200 lbs.
 SH-600 for loads up to 300 lbs. Powerful, yet light enough for hand use.

MODEL#	LENGTH	WIDTH	DEPTH	WEIGHT	CAPACITY (LBS.)	
					MAX.	WORKING
SH-100	6"	3-1/2"	1-3/8"	3-1/2 lbs.	100	50
SH-250	6"	6"	1-3/8"	6-3/4 lbs.	250	125
SH-400	6"	6"	1-3/8"	6-3/4 lbs.	400	200
SH-600	6"	7-1/4"	1-3/8"	8-1/4 lbs.	600	300

HANDI-TOOL

An effective, rapid means of handling small iron and steel parts from stock bins, boxes, kegs, tables or floor. Smooth, uninterrupted side surfaces allows fast, easy burrowing into loose material. A fingertip raise of the release bar drops the entire load.

MODEL#	WIDTH	LENGTH	HEIGHT	WEIGHT	CAPACITY
T-71	1-5/8"	4-3/4"	9-1/4"	2-3/4 lbs.	2-3 lbs.
T-72	3-1/8"	4-3/4"	9-1/4"	4-1/2 lbs.	4-5 lbs.
T-74	4-3/4"	6-1/4"	9-1/4"	8 lbs.	8-9 lbs.
LONG HANDLED MODELS:					
T-71-30	1-5/8"	4-3/4"	34"	2-3/4 lbs.	2-3 lbs.
T-72-30	3-1/8"	4-3/4"	34"	8 lbs.	4-5 lbs.



RUGGED CONSTRUCTION
 NEVER NEEDS RECHARGING
 STAINLESS STEEL HOUSING



AEC MAGNETICS 1-800-635-3954

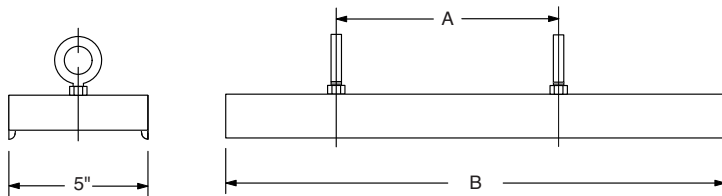
FAX 1-800-635-3955

PERMANENT MAGNETIC SWEEPERS



YARD SWEEPERS

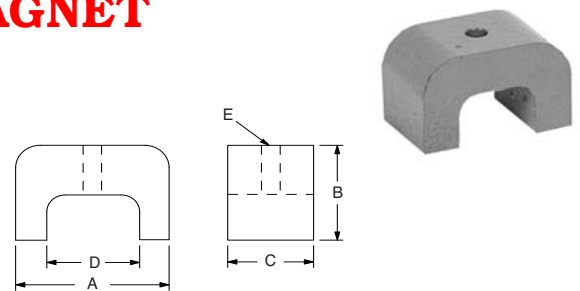
Pick up steel tramp on construction sites, etc.



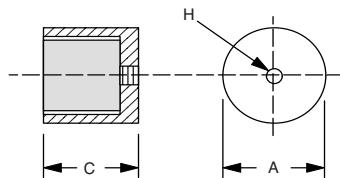
MODEL#	A	B	WEIGHT
YS-36	22"	36"	48 lbs.
YS-48	34"	48"	63 lbs.
YS-60	46"	60"	78 lbs.
YS-72	46"	72"	93 lbs.
YS-84	46"	84"	108 lbs.

ECLIPSE ALNICO HORSESHOE MAGNET

PRODUCT NUMBER	A	B	C	D	E	POWER (LBS)
E-811	1.187	0.750	0.750	0.562	.156	10
E-812	1.562	1.000	1.000	0.750	.187	18
E-813	1.750	1.187	1.187	0.875	.187	23
E-814*	2.250	1.375	1.750	1.375	.312	51
E-815*	2.750	1.625	2.250	1.625	.312	71
E-816*	3.125	2.125	3.250	1.875	.375	104



POT MAGNETS



PRODUCT NUMBER	D	L	H	POWER (LBS)
E-831	0.687	0.625	10-32	6
E-832	0.812	0.750	10-32	9
E-833	1.062	1.000	10-32	15
E-834	1.375	1.875	10-32	44

ALNICO V BUTTON MAGNETS

PRODUCT NUMBER	A	B	C	D	E	POWER (LBS)
E-821	0.500	0.375	.156	.281	.172	2
E-822	0.750	0.500	.219	.344	.187	4
E-823	1.000	0.625	.219	.344	.187	8
E-824	1.250	1.000	.312	.500	.281	11

