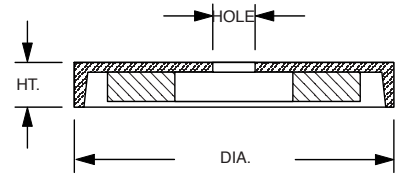
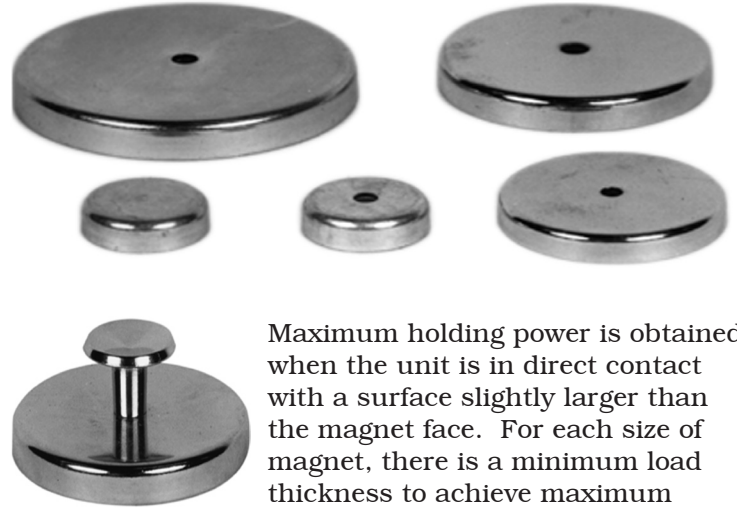


CERAMIC MAGNETIC CUP ASSEMBLIES

A permanent magnet bonded in a round, brightly-plated steel cup gives these assemblies added holding power. Post notes and announcements on any steel surface or use as fixturing magnets to hold parts in place. Quantity discounts available.



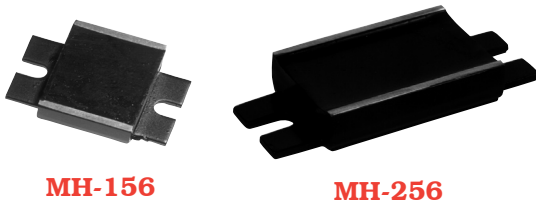
PRODUCT NUMBER	DIA.	HT.	HOLE	HANDLE	POWER (LBS)
MA-125-H	1.42	.28	.187	NO	7
MA-125-HH	1.50	.28	---	YES	7
MA-175-H	2.06	.32	.187	NO	10
MA-175-HH	2.06	.32	---	YES	10
MA-238-BH	2.65	.38	.375	NO	25
MA-238-H	2.65	.38	.250	NO	25
MA-238-HH	2.65	.38	---	YES	25
MA-287-H	3.20	.44	.281	NO	50
MA-287-HH	3.20	.44	---	YES	50
MA-338-H	3.75	.50	.313	NO	90
MA-338-HH	3.75	.50	---	YES	90
MA-454-H	4.90	.50	.500	NO	120
MA-454-HH	4.90	.50	---	YES	120



Maximum holding power is obtained when the unit is in direct contact with a surface slightly larger than the magnet face. For each size of magnet, there is a minimum load thickness to achieve maximum

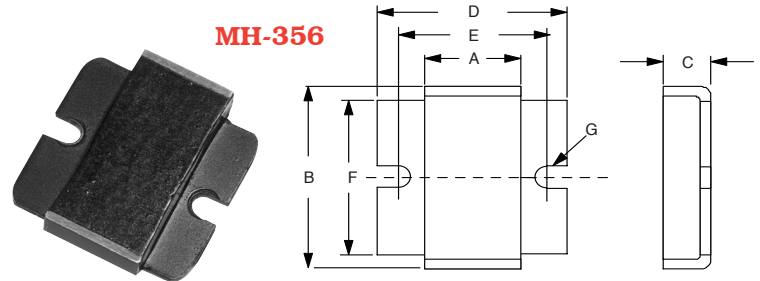
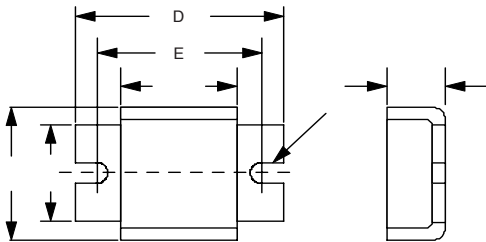
HORSE SHOE MAGNET ASSEMBLIES

These magnets are ideal for holding tools, mounting in fluid reservoirs, as conveyor rails, etc.



MH-156

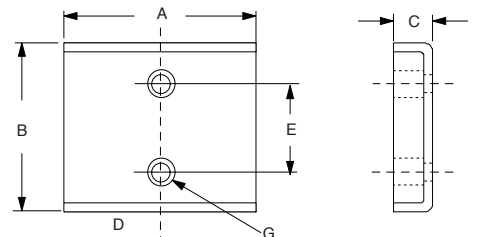
MH-256



MH-356



MH-856



PRODUCT NUMBER	DIMENSIONS-(IN)					F	G	WGT.	POWER (LBS)
	A	B	C	D	E				
MH-156	1.130	1.375	0.563	2.000	1.560	1.000	.281	.06	18
MH-256	2.125	1.312	0.500	3.250	2.625	1.000	.281	.08	31
MH-356	1.130	2.380	0.500	2.250	1.750	2.000	.281	1.0	31
MH-856	2.750	2.375	0.500	1.375	1.250	-----	.281	1.2	60