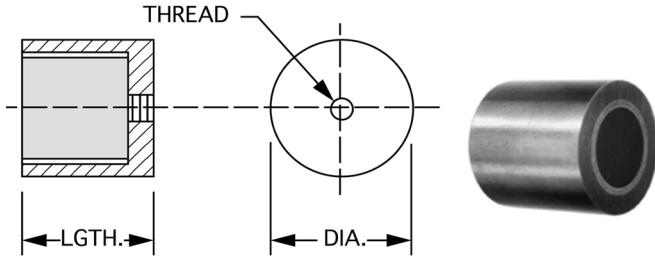


HIGH HEAT OR HIGH POWER

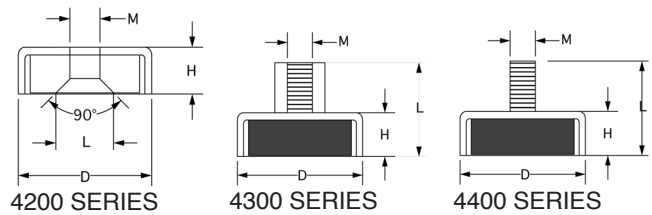


TAPPED NEODYMIUM ASSEMBLIES

PRODUCT NUMBER	DIA.	LENGTH	THREADS	POWER (LBS)
1592-T-08	0.375	0.500	8-32	5.00
1593-T-08	0.500	0.500	10-32	10.00
1594-T-08	0.625	0.500	10-32	15.00
1595-T-08	0.750	0.500	10-32	20.00
1597-T-08	1.000	0.500	1/4-20	30.00
1598-T-08	1.250	0.500	1/4-20	40.00
1599-T-08	1.375	0.500	5/16-18	60.00

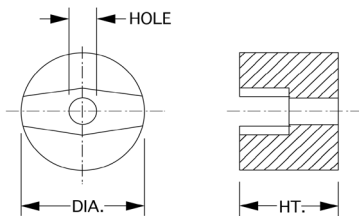
TAPPED ALNICO ASSEMBLIES

PRODUCT NUMBER	DIA.	LENGTH	THREADS	POWER (LBS)
1290-T-08	0.250	0.500	8-32	0.34
1291-T-08	0.312	0.500	8-32	0.79
1292-T-08	0.375	0.500	8-32	1.55
1293-T-08	0.500	0.500	10-32	2.50
1293-T-12	0.500	0.750	10-32	3.00
1293-T-16	0.500	1.000	10-32	3.50
1294-T-08	0.625	0.500	10-32	2.75
1294-T-12	0.625	0.750	10-32	4.25
1294-T-16	0.625	1.000	10-32	4.80
1295-T-08	0.750	0.500	10-32	5.25
1295-T-12	0.750	0.750	10-32	9.15
1295-T-16	0.750	1.000	10-32	9.45
1295-T-20	0.750	1.250	10-32	10.00
1296-T-08	0.875	0.500	1/4-20	8.60
1296-T-12	0.875	0.750	1/4-20	13.20
1296-T-16	0.875	1.000	1/4-20	16.50
1296-T-20	0.875	1.250	1/4-20	17.30
1297-T-08	1.000	0.500	1/4-20	7.25
1297-T-12	1.000	0.750	1/4-20	15.50
1297-T-16	1.000	1.000	1/4-20	17.00
1297-T-20	1.000	1.250	1/4-20	19.00
1298-T-12	1.250	0.750	1/4-20	17.50
1298-T-16	1.250	1.000	1/4-20	21.00
1298-T-20	1.250	1.250	1/4-20	25.00



PRODUCT NUMBER	DIA.	LENGTH	THREADS	POWER (LBS)
----------------	------	--------	---------	-------------

4200-016	16.0	5.0	3.5	11
4200-020	20.0	7.0	4.5	13
4200-025	25.0	8.0	5.5	30
4200-032	32.0	8.0	5.5	55
4200-036	36.0	9.0	6.5	63
4200-042	42.0	9.0	6.5	81
4200-048	48.0	11.5	8.5	150
4200-060	60.0	15.0	8.5	245
4200-075	75.0	18.0	10.5	356
4300-016	16.0	13.0	4.0	12
4300-020	20.0	15.0	4.0	20
4300-025	25.0	17.0	5.0	48
4300-032	32.0	18.0	6.0	75
4300-036	36.0	18.0	8.0	90
4300-042	42.0	20.0	8.0	150
4300-048	48.0	24.0	8.0	178
4300-060	60.0	30.0	10.0	248
4300-075	75.0	34.0	12.0	360
4400-016	16.0	5.0	4.0	12
4400-020	20.0	7.0	4.0	20
4400-025	25.0	8.0	5.0	48
4400-032	32.0	8.0	6.0	75
4400-036	36.0	8.0	6.0	90
4400-042	42.0	9.0	8.0	150
4400-048	48.0	11.5	8.0	178
4400-060	60.0	15.0	8.0	248
4400-075	75.0	15.0	10.0	360



ALNICO V BUTTON MAGNETS

PRODUCT NUMBER	DIA.	HT.	MOUNTING HOLE	POWER (LBS)
E-821	0.500	0.375	.172	2
E-822	0.750	0.500	.187	4
E-823	1.000	0.625	.187	8
E-824	1.250	1.000	.281	11