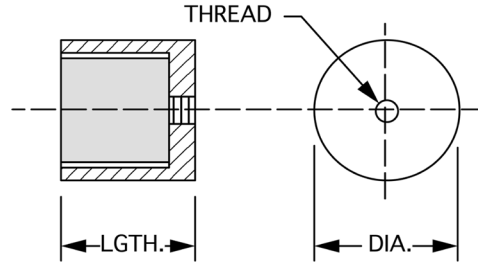


# PERMANENT MAGNETIC ASSEMBLIES

Maximum holding power is obtained when the unit is in direct contact with a surface slightly larger than the magnet face. For each size of magnet there is a minimum load thickness to achieve maximum holding power. Alnico magnet assemblies can handle temperatures up to 800 degrees Fahrenheit. Ceramic magnet assemblies can handle temperatures up to 200 degrees Fahrenheit.



## TAPPED ALNICO ASSEMBLIES

PRODUCT NUMBER	DIA.	LENGTH	THREADS	POWER (LBS)
1290-T-08	0.250	0.500	8-32	0.34
1291-T-08	0.312	0.500	8-32	0.79
1292-T-08	0.375	0.500	8-32	1.55
1293-T-08	0.500	0.500	10-32	2.50
1293-T-12	0.500	0.750	10-32	3.00
1293-T-16	0.500	1.000	10-32	3.50
1294-T-08	0.625	0.500	10-32	2.75
1294-T-12	0.625	0.750	10-32	4.25
1294-T-16	0.625	1.000	10-32	4.80
1295-T-08	0.750	0.500	10-32	5.25
1295-T-12	0.750	0.750	10-32	9.15
1295-T-16	0.750	1.000	10-32	9.45
1295-T-20	0.750	1.250	10-32	10.00
1296-T-08	0.875	0.500	1/4-20	8.60
1296-T-12	0.875	0.750	1/4-20	13.20
1296-T-16	0.875	1.000	1/4-20	16.50
1296-T-20	0.875	1.250	1/4-20	17.30
1297-T-08	1.000	0.500	1/4-20	7.25
1297-T-12	1.000	0.750	1/4-20	15.50
1297-T-16	1.000	1.000	1/4-20	17.00
1297-T-20	1.000	1.250	1/4-20	19.00
1298-T-12	1.250	0.750	1/4-20	17.50
1298-T-16	1.250	1.000	1/4-20	21.00
1298-T-20	1.250	1.250	1/4-20	25.00

## 2 & 3 POLE CERAMIC ASSEMBLIES

PRODUCT NUMBER	DIA.	LENGTH	THREADS	POWER (LBS)
1100-08	0.250	0.500	--	0.100
1100-12	0.250	0.750	--	0.150
1102-08	0.375	0.500	--	1.000
1102-12	0.375	0.750	--	1.750
1102-16	0.375	1.000	--	2.250
1104-08	0.500	0.500	--	2.750
1104-12	0.500	0.750	--	3.250
1104-16	0.500	1.000	--	3.750
2200-T-08	0.625	0.500	10-24	2.300
2200-T-12	0.625	0.750	10-24	5.100
2200-T-16	0.625	1.000	10-24	7.100
2201-T-08	0.750	0.500	10-24	5.000
2201-T-12	0.750	0.750	10-24	7.800
2201-T-16	0.750	1.000	10-24	9.800
2202-T-08	0.875	0.500	1/4-20	6.200
2202-T-12	0.875	0.750	1/4-20	11.800
2202-T-16	0.875	1.000	1/4-20	16.600
2203-T-08	1.000	0.500	1/4-20	8.400
2203-T-12	1.000	0.750	1/4-20	17.600
2203-T-16	1.000	1.000	1/4-20	20.800
<b>PAINTED ALNICO MODELS</b>				
2204-T-08	1.250	0.500	1/4-20	7.200
2204-T-12	1.250	0.750	1/4-20	22.800
2204-T-16	1.250	1.000	1/4-20	26.000
2204-T-20	1.250	1.250	1/4-20	34.000